

BOSS PRODUCTS
A Division of Northern Star Industries, Inc.
P.O. Box 787 Iron Mountain MI 49801-0787
www.bosspow.com

**2007 & NEWER JEEP WRANGLER
SPORT DUTY UNDERCARRIAGE
MOUNTING INSTRUCTIONS
(PART NO. LTA05283)**

WARNING

Many newer trucks are now equipped with air bags. DO NOT under any circumstances disable, remove or relocate any sensors or other components related to the operation of the air bags.

For recommended vehicle models refer to the Boss Snowplow Application Chart and Selection Guide.

To comply with Federal Regulations and to assure a safe vehicle, the Front Gross Axle Weight Rating (FGAWR), Rear Gross Axle Weight Rating (RGAWR), and the Gross Vehicle Weight Rating (GAWR) must not be exceeded at any time.

Due to the variety of equipment that can be installed on this vehicle, it is necessary to verify that the Front Gross Axle Weight Rating (FGAWR), Rear Gross Axle Weight Rating (RGAWR), and the Gross Vehicle Weight Rating (GAWR) are not exceeded at any time. This may require weighing the vehicle and adding ballast as necessary. It may also limit payload capacity of the vehicle. It is the operator's responsibility to verify that these ratings are not exceeded.

2007 & NEWER JEEP WRANGLER SPORT DUTY UNDERCARRIAGE MOUNTING INSTRUCTIONS

The mounting procedure outlined below covers the 2007 & Newer Jeep Wrangler. Note that a Front Gross Axle Rating (FGAWR) of 2500 lbs. is required. A suspension upgrade and additional ballast may be necessary. You will need to refer to the illustrations and familiarize yourself with each of the undercarriage components and their relative position to each other. Then proceed as follows:

1. Remove the vehicle bumper. For vehicles with tow hooks skip to step 3.
2. Separate the plastic bumper cover from the steel bumper. Remove and replace the existing bumper bolts with $\frac{1}{2}$ " – 13 x 1- $\frac{1}{2}$ " Grade 5 Hex Head Bolt (A) and $\frac{1}{2}$ " Flat Washer (D).
3. Place Driver Side Push Beam Support Plate (62B) against the vehicle frame and install one $\frac{1}{2}$ " – 13 x 5" Grade 5 Hex Head Bolt (F) with 3- $\frac{3}{8}$ " Frame Spacer placed between the vehicle blocker beam supports with one $\frac{1}{2}$ " Flat Washer (D) and one $\frac{1}{2}$ " – 13 Hex Head Nylon Lock Nut (B). Fasteners should only be finger tight.
4. Install one $\frac{1}{2}$ " – 13 x 1" Grade 5 Hex Head Bolt (E), one $\frac{1}{2}$ " Split Lock Washer (C), and one $\frac{1}{2}$ " – 13 Hex Head Nut (G) through Driver Side Push Beam Support Plate (62B) and into the vehicle frame. Fasteners should only be finger tight.
5. Temporarily place two $\frac{1}{2}$ " – 13 x 1- $\frac{1}{2}$ " Grade 5 Hex Head Bolt (A) through the front of the frame and Driver Side Push Beam Support Plate (62B) to insure that they line up properly before drilling the frame. Leave these in place until the bumper is reinstalled.
6. Drill a 9/16" hole into the side of the frame using the rear hole of the Driver Side Push Beam Support Plate (62B) as a guide.
7. Insert Nut Bar (101) through the front of the vehicle frame and place one $\frac{1}{2}$ " – 13 x 1- $\frac{1}{2}$ " Grade 5 Hex Head Bolt (A) with one $\frac{1}{2}$ " Split Lock Washer (C) through Driver Side Push Beam Support Plate (62B) and into the vehicle frame and tighten these fasteners.

8. Drill a 9/16 hole up through the bottom of frame using the rear hole of the Driver Side Push Beam Support Plate (62B) as a guide.
9. Insert Nut Bar (101) through the front of the vehicle frame and place one ½" – 13 x 1-½" Grade 5 Hex Head Bolt (A) with one ½" Split Lock Washer (C) through Driver Side Push Beam Support Plate (62B) vehicle frame. Fasteners should only be finger tight.
10. Cut off the ends of Nut Bars (101).
11. Repeat steps 3-10 to install Passenger Side Push Beam Support Plate (62A).
12. If the plastic bumper cover was separated replace, replace the existing vehicle bumper bolts with four ½" – 13 x 1-½" Grade 5 Hex Head Bolts (A) and four ½" Flat Washers (D). Secure the steel bumper to the vehicle frame and Driver and Passenger Side Push Beam Support Plate (62A & 62B) with ½" – 13 Hex Head Nylon Lock Nuts (B). Proceed to step 14. For vehicles with tow hooks proceed to step 13.
13. Reinstall the bumper back on to the vehicle using the factory fasteners. The two factory tow hook support plates will need to be reinstalled on inner side of the frame only, behind the frame horns. The two other factory tow hook support plates will be replaced by the Push Beam Supports Plates on the outer side of the frame.
14. Place Push Beam (62) between Driver Side and Passenger Side Push Beam Support Plates (62A & 62B). Push Beam (62) should be placed at a height of 14-1/2" from the ground to the center of the hook hole.
15. Attach Push Beam (62) using eight ½"-13 X 1-1/2" Hex Head Bolts (A) and eight ½"-13 Hex Head Nylon Lock Nuts (B).
16. Check all components for proper clearance around moving parts on the vehicle by fully turning the steering wheel in both directions.
17. With all undercarriage parts in place, securely fasten all mounting hardware. It is important that all fasteners be properly torqued (see Fig. 3) to assure a safe operating plow. Re-tighten all fasteners after 2 hours of plowing.

Installation Notes:

- A. This installation requires Headlight Adapter Kit MSC09993.

2007 & NEWER JEEP WRANGLER SPORT DUTY UNDERCARRIAGE INSTALLATION PROCEDURE

REF. NO.	DESCRIPTION	PART NO.	QTY.
62	Push Beam Assembly, Sport Duty	PBA05277	1
62A	Push Beam Support Plate, Passenger Side	PBA05270	1
62B	Push Beam Support Plate, Driver Side	PBA05269	1
101	3-3/8" Frame Spacer	MSC05280	2
102	Nut Bar 1/2"-13 X 24"	LTA05391	4
	FASTENER KIT, JEEP WRANGLER, 07&UP	HDW05284	1

Includes:

A	1/2" - 13 x 1-1/2" Grade 5 Hex Head Bolt	HDW01728	16
B	1/2" - 13 Hex Head Nylon Lock Nut	HDW01748	14
C	1/2" Split Lock Washer	HDW01732	6
D	1/2" Flat Washer	HDW05507	6
E	1/2" - 13 x 1" Grade 5 Hex Head Bolt	HDW01781	2
F	1/2" - 13 x 5" Grade 5 Hex Head Bolt	HDW05499	2
G	1/2" - 13 Hex Head Nut	HDW02410	2

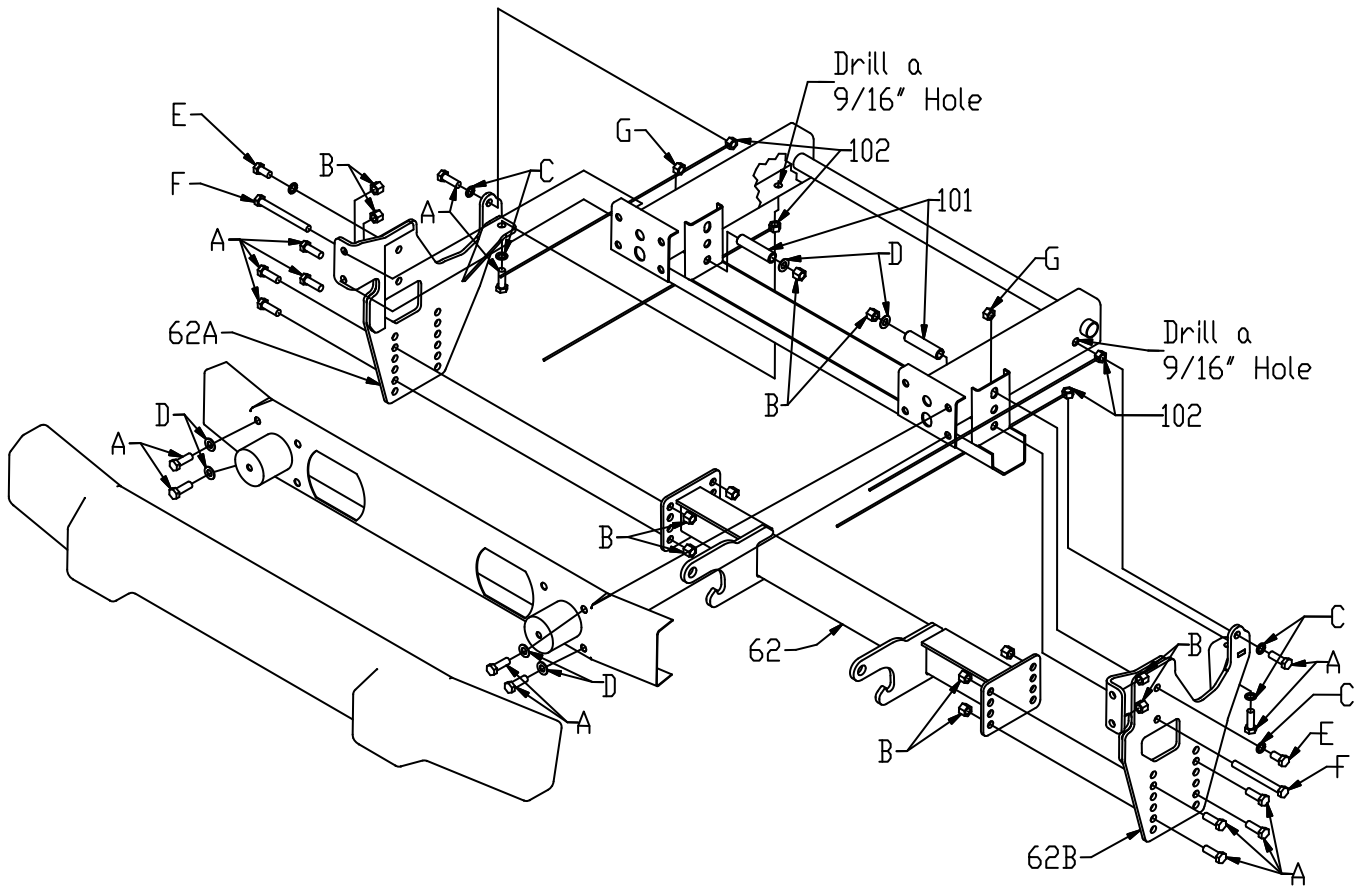


Figure 1

G10456

RECOMMENDED PUSHBEAM HEIGHT

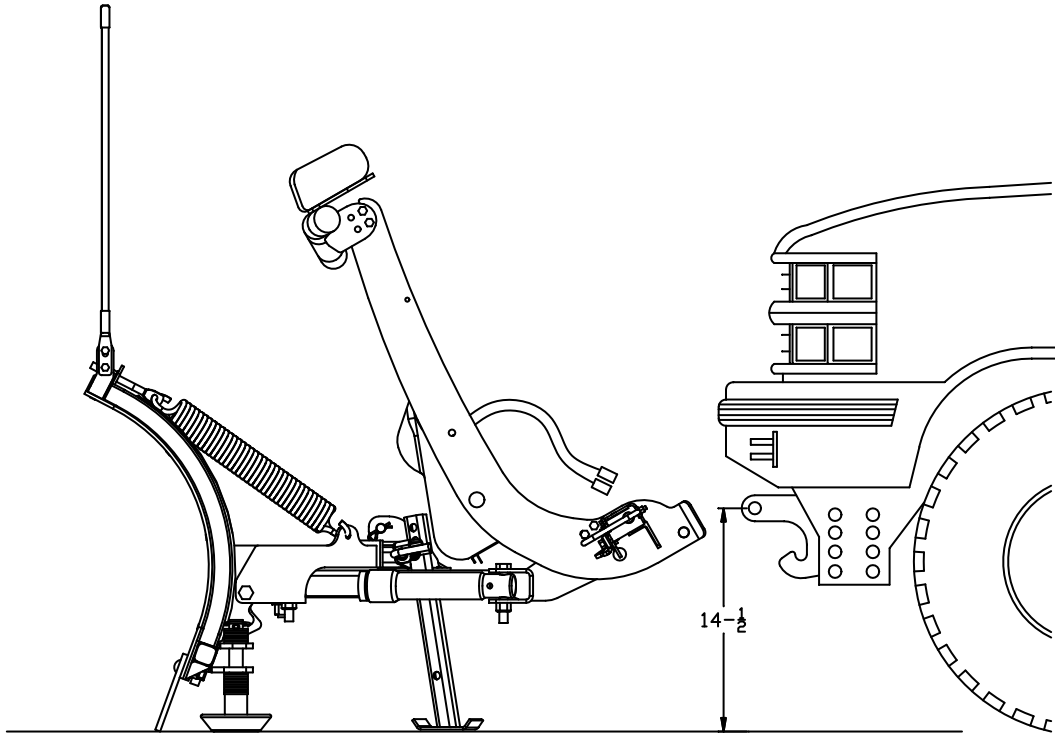
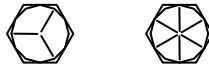


Figure 2

G10299

GUIDE TO RECOMMENDED ASSEMBLY TORQUE



DIAMETER / PITCH	GRADE 5	GRADE 8	GRADE 8.8	GRADE 10.9
1/4-20	6	9		
5/16-18	14	19		
3/8-16	23	33		
7/16-14	38	53		
1/2-13	56	80		
9/16-12	82	116		
5/8-11	113	159		
3/4-10	201	283		
M10 X 1.25			36	
M10 X 1.5				49
M12 X 1.75				71
M14 X 2.0				80

ALL TORQUE VALUES ARE IN FOOT-POUNDS (FT.-LB.)

Figure 3

G10410

* The torque values listed above are based on dry, coated bolts, variables such as oil, or other lubrications may appreciably alter these values and must be taken into consideration.

NOTE: IT IS IMPORTANT THAT ALL FASTENERS BE PROPERLY TORQUED TO ASSURE A SAFE OPERATING PLOW. RE-TIGHTEN ALL FASTENERS AFTER 2 HOURS OF PLOWING.